



2030 SPEERS ROAD | OAKVILLE, ONTARIO | L6L 2X8 | 1-888-945-5725 | www.willpak.com

## TOUCHLESS CAR COVER

### PART # 34002

### CONTENTS

1 - Touchless Car Cover	1 - Cable
1 - Storage Bag	1 - Padlock
	2 - Extra straps with buckles

**THE TOUCHLESS CAR COVER IS DESIGNED FOR INDOOR USE.  
IT IS NOT TO BE USED AS A TEMPORARY GARAGE.**

### READ INSTRUCTIONS COMPLETELY BEFORE STARTING.

Check kit before starting to ensure all pieces are included. If you have any questions or problems, call Willpak Industries at 1-888-945-5725 or 905-827-0224, before proceeding with use or installation.

### PLEASE NOTE:

We have found it better to gently open the cover, rather than using the “launch” method when you first open the box. Simply remove the strap. The Touchless Car Cover will have a lot of tension from shipping and will want to spring open - allow it to open one “fold” and the rest will have less tension and open smoother.

Make sure the buckles and straps do not interfere with the ability for the Touchless Car Cover to open.

When you first open the Touchless Car Cover it will take a couple of hours for the wrinkles in the fabric to disappear, after the Touchless Car Cover will take its shape.

There are a variety of hooks and straps that can be used and adjusted - take some time to experiment. If you use the Touchless Car Cover often (i.e. daily) and fold it regularly you will become used to folding it and become quicker at it.

### WARNINGS

Open the cover slowly and safely in a wide open area, away from objects, animals and people.

Do no use the Touchless Car Cover in windy and/or stormy conditions. The Touchless Car Cover is designed for indoor use, it is not to be used as a temporary garage.

Do not operate car when the Touchless Car Cover is on the vehicle.

Do not run engine when the Touchless Car Cover is on the vehicle.

Do not leave animals or passengers in vehicle when the Touchless Car Cover is on the vehicle.

Do not let children use this cover as a toy.

Use the cover only for its intended use.

## **UNFOLD/INSTALL INSTRUCTIONS**

Unzip the carrying case and carefully let the Touchless Car Cover unfold itself. When first opening the Cover after shipping it is best to gently open the cover, rather than using the “launch” method as the Touchless Car Cover will have a lot of tension from shipping and will want to spring open - allow it to open one “fold” and the rest will have less tension and open smoother.

You can orient the front and sides by knowing that the blue skirts are on the front and back and the logos/zippered opening are on the sides. Note, there is no front or rear as the ends are universal.

Raise one end of the Touchless Car Cover by picking up the blue skirt and attaching the male clip on the lower rod (contained in the lower black sleeve) to the female clip on the upper rod.

Carry the cover to the car. If you walk slightly faster than a normal walk the Touchless Car Cover is designed to raise slightly or almost float on to the car.

If you are walking through a garage door to the inside of the garage the Touchless Car Cover will bend slightly as it goes through the door, this will not harm the Cover.

Adjust the Touchless Car Cover to your car. Please note, it has more hooks and buckles than you will need. This is to accommodate many types of cars, even modified ones, and to keep the cover in place. As well the buckles and hooks are interchangeable, if you prefer a buckle where there is a hook, simply change the configuration.

The straps on the sides, just in front of and in back of the door, are designed to go in front of and in back of the wheels.

The hooks can be attached to the body below the sight line or under structure.

If the cover is attached and adjusted well it should have a smooth overall shape. If there is a slight sag to the top, while not as attractive, it will still work as well.

## **TIPS & HINTS**

If you are going to use the cover for indoor daily use and wish to drive in and out of it there is no need to use too many attachment points. Merely place a weight (i.e. a 10lb dumbbell) on either side around the center of the zipper door. Raise the end you wish to enter and exit out of by hooking the skirt hoods to the loops on top of the Touchless Car Cover. A recommendation for this is to attached a small 1/2” eye hook to the ceiling of the garage and attached a small piece of nylon cord to the loops. A light pull will raise the Touchless Car Cover enough to allow driving in and out. Simply drop the cord and place the two side weights when returning and your car will be protected with very little effort. See our website for further info and photos on this tip/hint.

# OPENING THE TOUCHLESS CAR COVER



## STEP 1

Find a clear area, preferably grassy or clean. When opening the car cover for the first time use **EXTREME CAUTION**. The cover has been folded an extra time for shipping and is spring loaded. Press and hold the whole folded cover firmly.



## STEP 2

Continue to hold the cover firmly and detach the buckles. Continue holding the cover even after detaching the buckles.



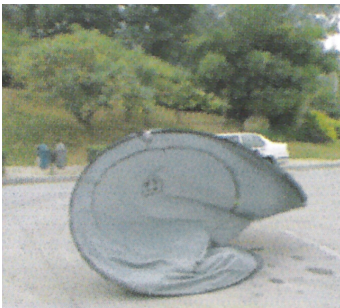
## STEP 3

Continue to hold the fiberglass poles along the edge of the cover. Do not let it spring open.



## STEP 4

Make certain the area is clear of all objects, including people. Simply toss the Touchless Car Cover in the air and it will naturally open.



## STEP 5

The Touchless Car Cover is now open and ready to use. Slide the cover over the car and use the various combinations of buckles and straps to attach to your car.

**NOTE:** When folding the Cover in the future it will fold down to 48" in diameter. Therefore this extreme "springing" action will not be an issue. The cover is folded down to 36" diameter for shipping only.

# FOLDING AND STORAGE INSTRUCTIONS.

